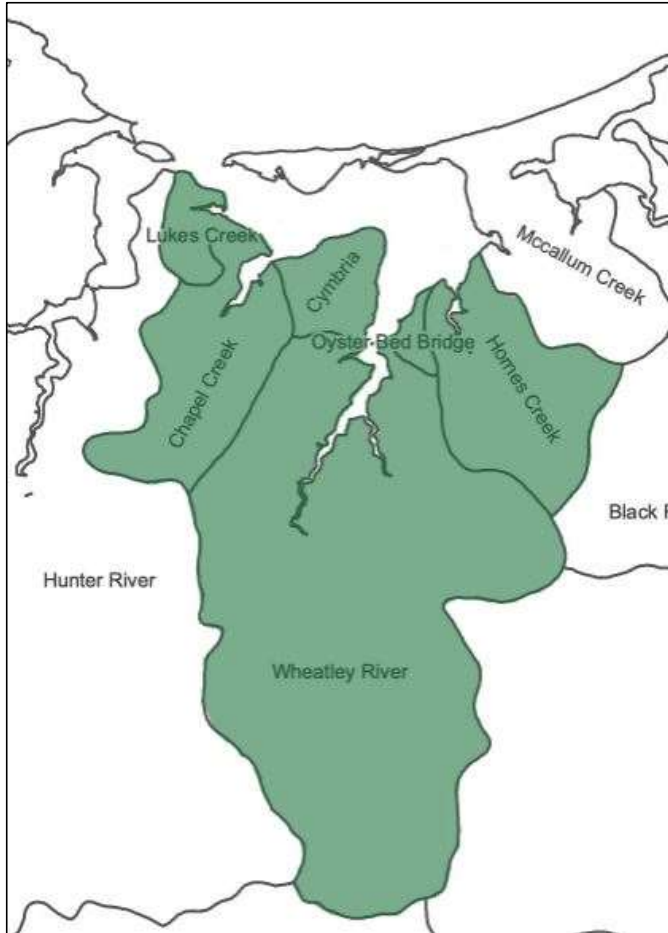


# 2024-2025 Summary

---

WATERSHED MANAGER'S REPORT





# WRIG 2024-2025 Goals

1. **Improve** brook trout habitat in-stream
2. **Improve** surface water quality
3. **Increase** aquatic connectivity for migrating fish
4. **Improve** upland wildlife habitat
5. **Increase** resilience to the impacts of climate change
6. **Provide** opportunities for environmental education
7. **Encourage** public engagement and connection to the watershed



# Year In Review

## 2024 Summer Field Crew

- Sarah MacWilliams – Clean Leadership Intern
- Lilly O’Rielly – PS Watershed Tech
- Haley Kennedy – PS Watershed Tech
- Katie Lowe – PS Watershed Tech
- Maddy MacLeod – HS Watershed Tech



## 2024-25 Fall/Winter

- Sarah MacWilliams
  - Project assistant
- Alexa MacPhail
  - Field assistant



## Training

- Watershed training workshop
- First aid training
- Wood & Fish Habitat course
- Chainsaw safety course
- Microsoft excel & word at HC
- CART 12-week course



# Improve Brook Trout Habitat

- 1. Mitigate sediment inputs**  
brush mats built along 25 m of riverbank
- 2. Stabilize the riverbanks**  
200 dogwood stakes in construction area
- 3. Improve canopy cover**  
>500 native trees/shrubs in riparian zones
- 4. Remove in-stream blockages**  
stream enhancement along ~2.5 kms





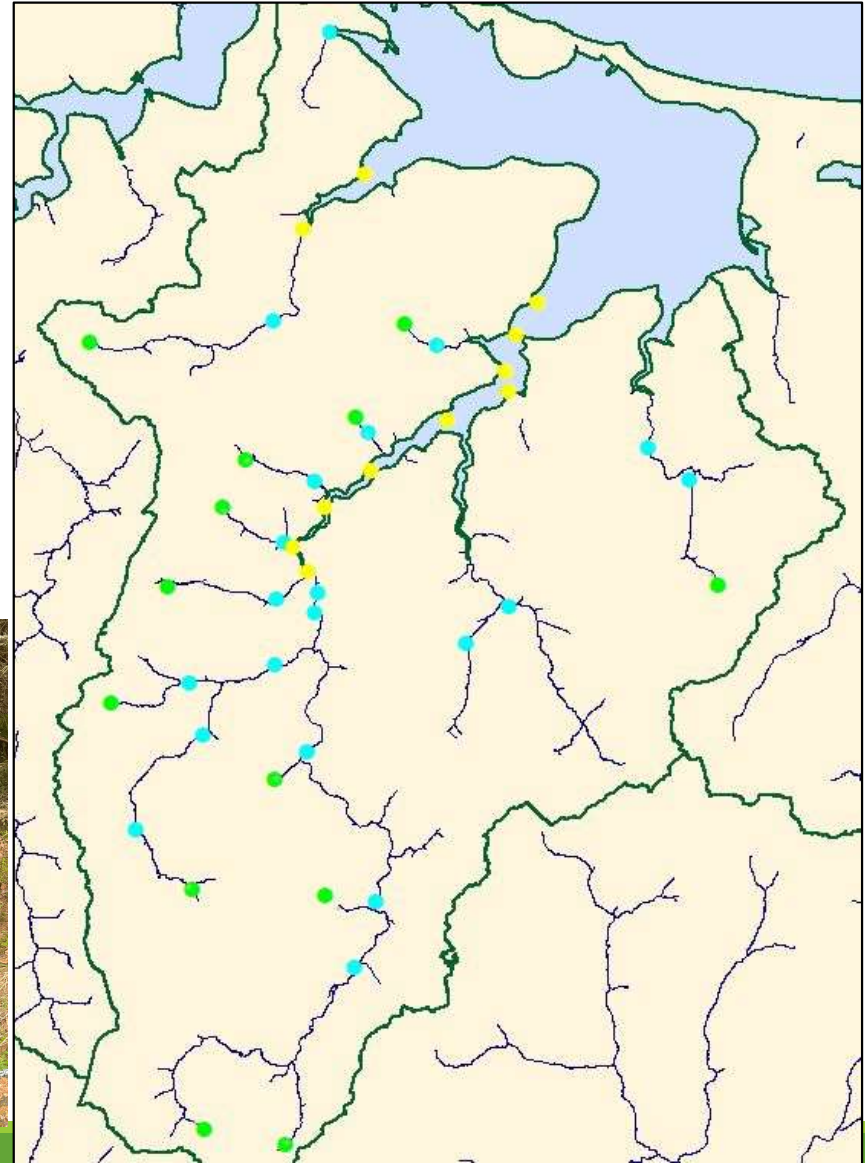
# Improve Surface Water Quality

- Water quality monitoring was conducted at **20 sites** on a weekly basis from May to August
- Qualitative and quantitative surveys for signs of anoxia were conducted at **11 sites** in the OBB and Chapel Creek estuaries every 2 weeks

## Remote Loggers

1 x dissolved oxygen

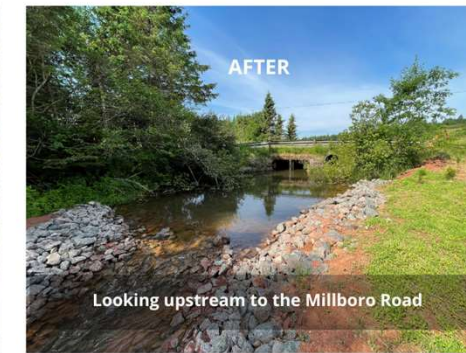
3 x temperature





# Increase Aquatic Connectivity

- Fish passage was restored at the Millboro Road crossing by:
  - Realigning the downstream channel
  - Building a series of rock pools
- Crossing/culvert assessment work continued (~30)





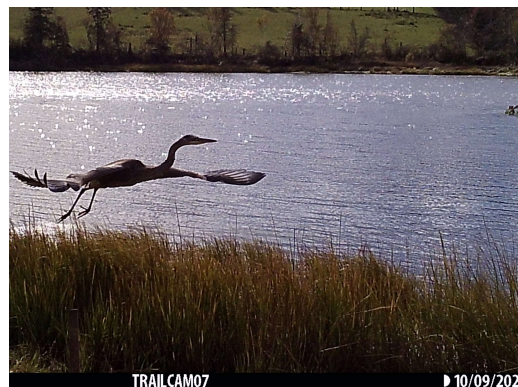
# Improve Upland Wildlife Habitat

**10 new tree swallow banding boxes** were installed & monitored: 42 chicks & 8 female adults banded



**215 trees** were planted and maintained on upland properties  
**60 trees** were given out to the community at the **Duck Race**

**Wildlife trail cameras** were monitored & we added a third camera site



**2 new osprey nesting posts & platforms** were installed





# Increase Resilience to the Impacts of Climate Change

**120 trees** were planted  
and maintained on  
coastal shoreline  
properties



**Three shoreline/beach  
clean ups** were conducted  
along coastal areas





# Environmental Education & Public Engagement









# 2025 Summer Field Season

- Tree swallow monitoring & banding
- Otter monitoring program
- Water quality monitoring
- Riparian work along the main branch
- Invasive species surveys
- Floodplain reconnection project



# THANK YOU!



- WRIG corporate sponsors
- WRIG members & volunteers
- WRIG board of directors

