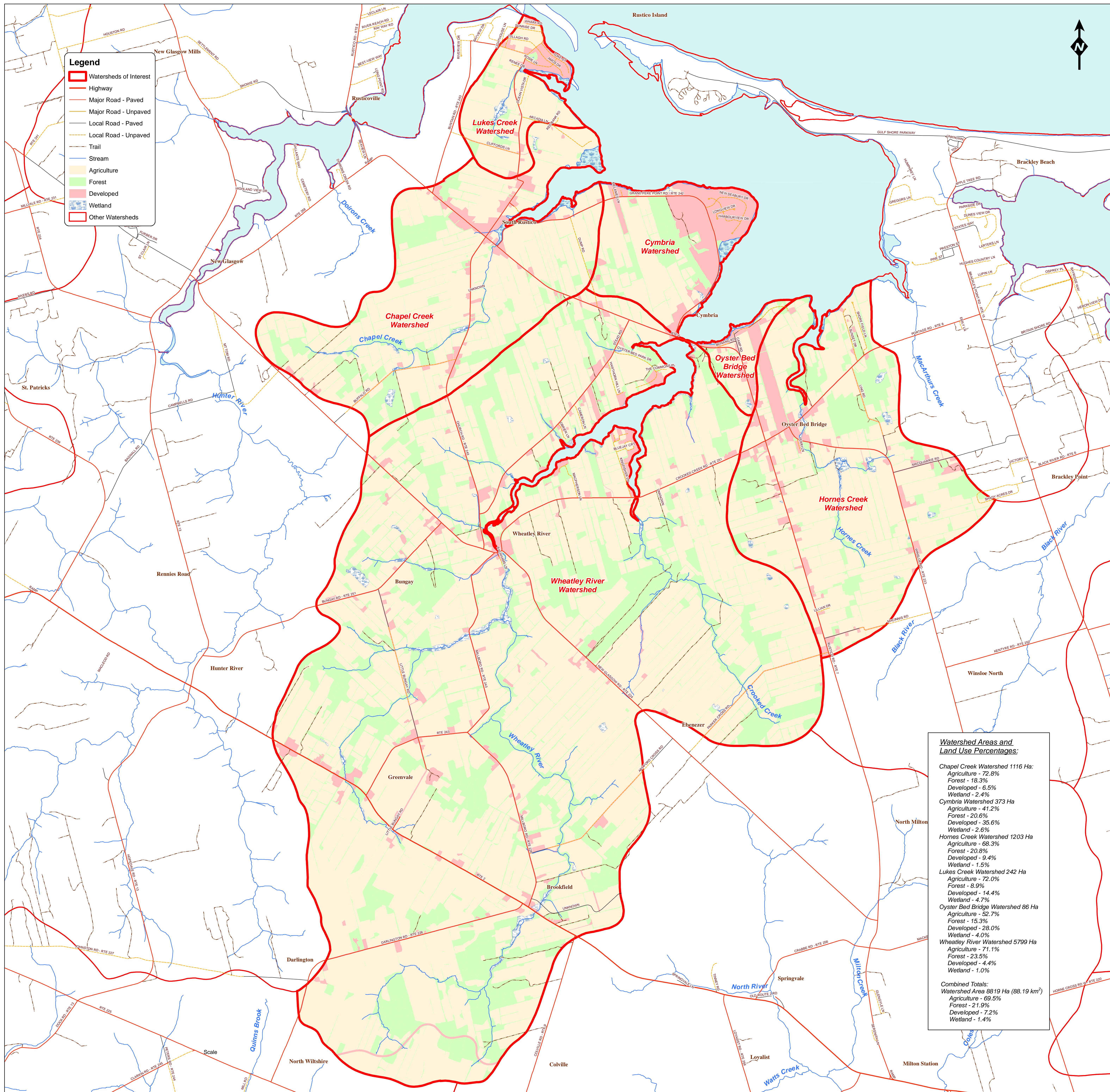


# Land Use of Wheatley River and Adjacent Watersheds, PEI



**Legend**

- Watersheds of Interest
- Highway
- Major Road - Paved
- Major Road - Unpaved
- Local Road - Paved
- Local Road - Unpaved
- Trail
- Stream
- Agriculture
- Forest
- Developed
- Wetland
- Other Watersheds

**Watershed Areas and Land Use Percentages:**

<b>Chapel Creek Watershed 1116 Ha:</b>
Agriculture - 72.8%
Forest - 18.3%
Developed - 6.5%
Wetland - 2.4%
<b>Cymbria Watershed 373 Ha:</b>
Agriculture - 41.2%
Forest - 20.6%
Developed - 35.6%
Wetland - 2.6%
<b>Hornes Creek Watershed 1203 Ha:</b>
Agriculture - 68.3%
Forest - 20.8%
Developed - 9.4%
Wetland - 1.5%
<b>Lukes Creek Watershed 242 Ha:</b>
Agriculture - 72.0%
Forest - 8.9%
Developed - 14.4%
Wetland - 4.7%
<b>Oyster Bed Bridge Watershed 86 Ha:</b>
Agriculture - 52.7%
Forest - 15.3%
Developed - 28.0%
Wetland - 4.0%
<b>Wheatley River Watershed 5799 Ha:</b>
Agriculture - 71.1%
Forest - 23.5%
Developed - 4.4%
Wetland - 1.0%
<b>Combined Totals:</b>
<b>Watershed Area 8819 Ha (88.19 km<sup>2</sup>)</b>
Agriculture - 69.5%
Forest - 21.9%
Developed - 7.2%
Wetland - 1.4%