

2020-2021 Summary

WATERSHED MANAGER'S REPORT





WRIG 2020-2021 Goals

1. Monitor surface water quality & maintain database records
2. Improve upland wildlife habitat
3. Improve fish habitat & connectivity
4. Promote public education and awareness



Year In Review

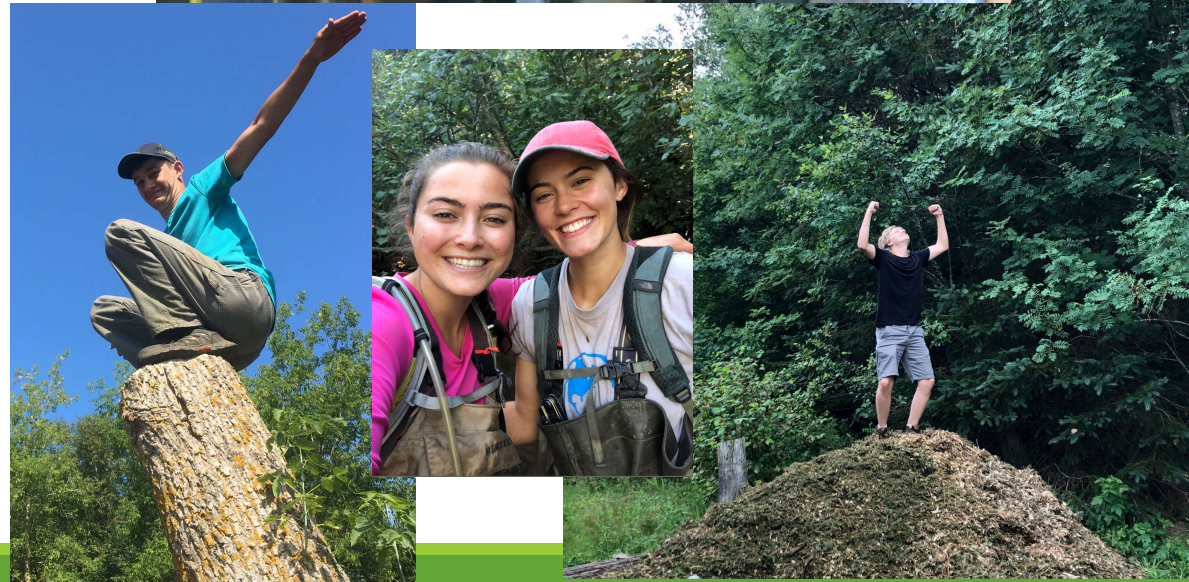
2020 Summer Field Crew

- Tessa Craig – Field Crew Supervisor
- Izzy Fitzpatrick – Riparian Health Tech.
- Sam Pastoor – Field Crew Tech.
- Kale Parnham – Field Crew Tech.



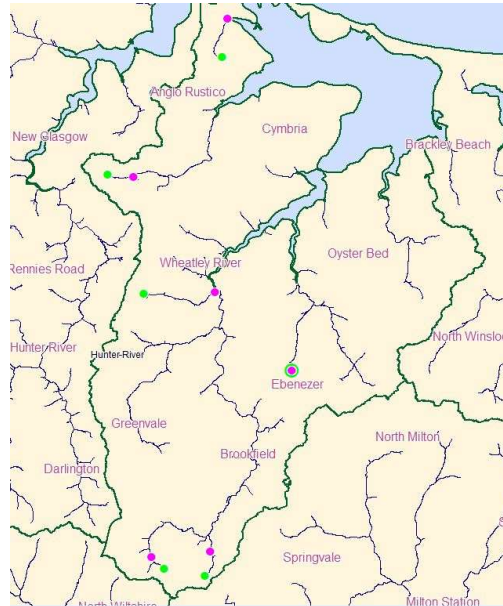
Training

- First aid training
- Woodland ecology course
- Shadowing watershed groups
- Invasive species & bat seminars
- Trout redd identification



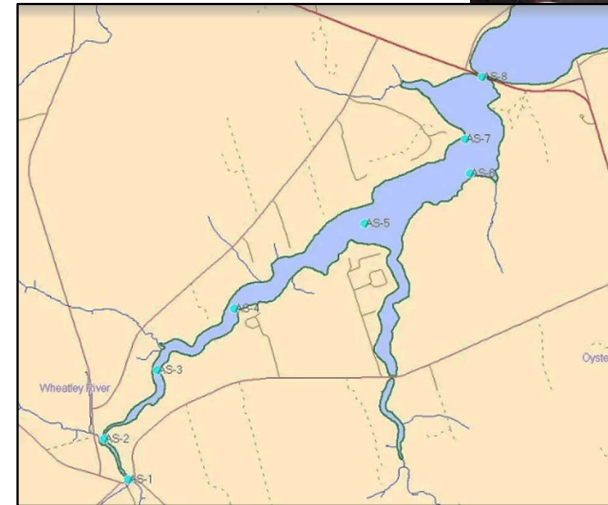
1. Monitor Water Quality

Water quality monitoring was conducted at **20 sites** on a weekly basis in June, July & August

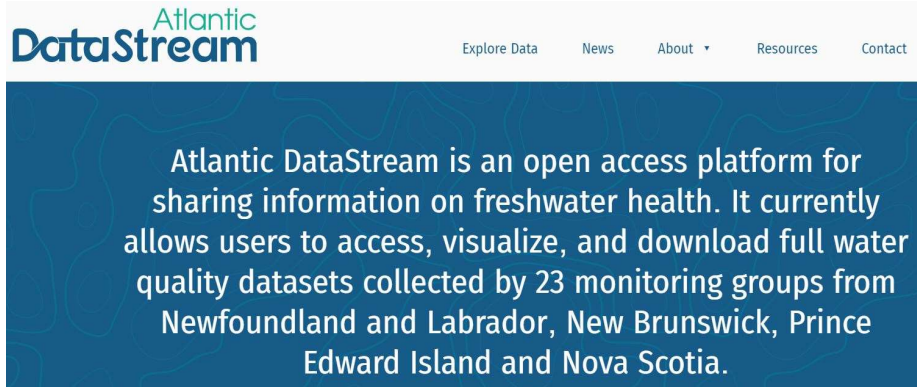


Headwater surveys were conducted in spring and fall

Qualitative and quantitative surveys for signs of anoxia were conducted at **8 sites** from WR Bridge to OBB Bridge on a monthly basis



1. Maintain Water Quality Database



Atlantic DataStream

Explore Data News About Resources Contact

Atlantic DataStream is an open access platform for sharing information on freshwater health. It currently allows users to access, visualize, and download full water quality datasets collected by 23 monitoring groups from Newfoundland and Labrador, New Brunswick, Prince Edward Island and Nova Scotia.

Water quality records from *2013-2020* added to **Atlantic DataStream** website:

- 2013 → 25 records
- 2014 → 55 records
- 2015 → 39 records
- 2016 → 30 records
- 2017 → 150 records
- 2018 → 181 records
- 2019 → 166 records
- 2020 → 204 records
- **TOTAL → 850 records**



2. Improve Upland Wildlife Habitat



587 native trees/shrubs were planted on 8 upland parcels in the watershed to:

- Increase biodiversity
- Widen hedgerow
- Provide wind break
- Attract wildlife
- Prevent erosion



Nesting Boxes

- 13 *Tree Swallow* boxes built in summer
- 12 more built over winter
- 12 *American Kestrel* boxes built in winter & installed in spring
- 3 *Wood Duck* boxes installed in spring
- All watershed nesting boxes input in management plan, and cleaned & prepped for spring

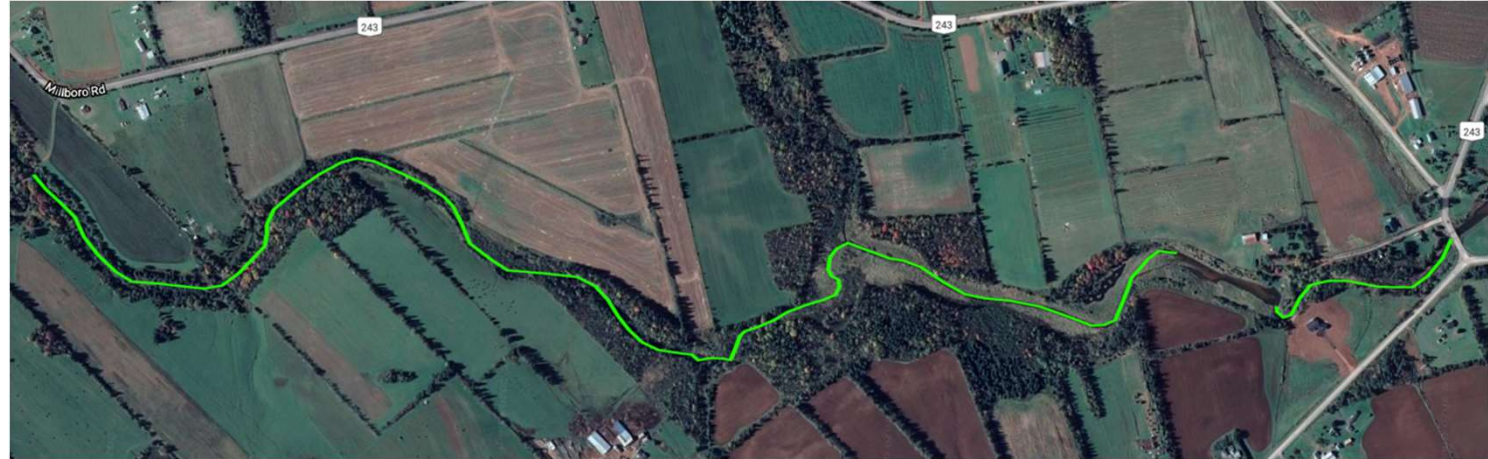
Pollinator Garden

85 new plants added



3. Improve Fish Habitat & Connectivity

Riparian Health Assessments were conducted and in-stream blockages were removed along **3 km** of the Wheatley River



2 large brush mats were built along the same section (near the forks)



3. Improve Fish Habitat & Connectivity



New wing deflector built to better “pinch” stream

Deflector from 2017 widened for greater effectiveness



100 native trees/shrubs planted in riparian areas

4. Community Outreach & Education



Info table at North Rustico Sea Walk Park

- Provide information & resources and present special topics

Assisting academic research

- Fish community sampling – beach seines in the OBB estuary
- Trout sampling – electrofishing and redd surveys in the Wheatley River



Community shoreline cleanup



River Duck Race

- Sold all 300 duck tickets!
- ~\$1000 funds raised!
- 30 trees donated to community



2021 Summer Field Season

- Headwater surveys
- Water quality monitoring
- Survey & map sediment problem areas along the Wheatley River
- Habitat & stream rehabilitation
- Develop a sediment management plan
- Maintain & continue to improve Rackham's Pond area
- Community education and engagement events

